

THE IRRESISTIBLE FLAMES OF MASPORT



GAS LOG FIRE FLUE MANUAL 2004

552338

ISSUE A, JANUARY 2004



AUSTRALIA
PO Box 533, Braeside, Victoria 3195
Ph. 1300 366 225 fax 1800 035 594
email sales@masport.com.au
www.masport.com.au

Masport®
gas & wood fires

Masonry Chimney B Vent Gas Flue Kit

Product Description

Part Number

Masonry Flue Kit - 5m

552322



Piccolo



New Orleans



Sofia



New York



Madrid



**Masonry Chimney
Extension Kit
- 2 metres**

Part No: 946-514

This kit contains: Gas Cowl, Chimney Flashing Plate, Upper Flexi Flue, Lower Flexi Adapter, Flexi Flue 5 metre.

Will fit Masport Piccolo, Sofia and Madrid, New Orleans & New York Gas Fires

Masonry Chimney B Vent Gas Flue Kit Installation Instructions



Gas Cowl

This flue kit has been manufactured in accordance with AS5601 2002. To ensure safety this flue kit must be installed as outlined in these instructions. The appliance to which it is connected to must be installed in accordance with its manufacturers specifications.

300 x 400m Chimney Flashing Plate

- 1 Ensure the chimney is clean and free of soot. Check the chimney for structural soundness
- 2 Check the height of the chimney to ensure the flexi-flue liner length is sufficient for installation. Check chimney meets building code for height above closest roofline, as this may cause down draught problems if the chimney is too low.
- 3 Stretch flexi-flue liner to required length (maximum of 5 metres) if extra length is required in the flue, 100mm galvanized pipe lengths can be added (crimped end into the flexi-flue) or using an additional length of flexi-flue by adding a flexi-flue joiner.
- 4 Secure upper flexi-flue adapter to flexi-flue (crimped end down) by riveting with a washer under the rivet or self-taping screws (not supplied in kit).
- 5 Insert Upper Flexi-Flue Adapter into Chimney Flashing Plate and ensuring top of adapter is flush with top of plate. Secure with rivets or screws (not supplied) ensuring fastening (rivets or screws are at least 60mm below the top.
- 6 Lower the flexi-flue into chimney
- 7 Secure chimney flashing plate to chimney using concrete nails or similar (not supplied in kit). Weather-seal the chimney flashing plate using mortar or silicone.

Flexi Flue

- 8 Fit and secure gas cowl.
- 9 Secure flexi-flue to draft diverter spigot using rivets or self tapping screws.

Lower Flexi Flue Adaptor



Masonry Chimney Extension Kit - 2 metres

Part No: 946-514

Flue Kit Part Number: 552322

Note: It is the responsibility of the Installer to ensure that the installation of this flue kit complies with local body and AS5601 2002 standards.

Will fit Masport Piccolo, Sofia , Madrid, New Orleans & New York Gas Fires

Inbuilt Zero Clearance B Vent Gas Flue Kit

Product Description

Part Number

Zero Clearance
Flue Kit

552327



Piccolo



New Orleans



Sofia



New York



Madrid

This kit contains: Gas Cowl, Outer Liner 900mm x 4,
Inner Flue Crimped 900mm x 4

Will fit Masport Piccolo, Sofia, Madrid, New Orleans & New York Gas Fires

Inbuilt Zero Clearance Gas Flue Kit Installation Instructions



Gas Cowl

Inner Flue
100mm dia x
900mm x 4

Outer Heat
Shield
150mm dia
x 900mm x 4

This flue kit has been manufactured in accordance with AS5601 2002. To ensure safety this flue kit must be installed as outlined in these instructions. Heater and flue clearances from combustible walls and timber framing must be in accordance with Masport specifications.

- 1 Locate the heater and zero clearance box in the proposed position and mark the point for penetration that is directly above the centre of the heater flue outlet. Check that the heater location allows the flue outer heat shield to clear all combustibles and timber framing by 25mm.
- 2 Cut a 200mm square hole where penetration is required using mark as guide. Fit non-combustible nogs in the ceiling space if required.
- 3 Measure overall flue length required. Assemble outer heat shield lengths together and secure with pop rivets or self-taping screws. Lower outer heat shield through the roof or false chimney chase and secure to top of zero clearance box.

The flue is required to be at least 500mm above the nearest point on any part of the roof. It is recommended that extending the flue above the ridgeline will help with down drafting issues. Refer to AS5601 2002 for more information.

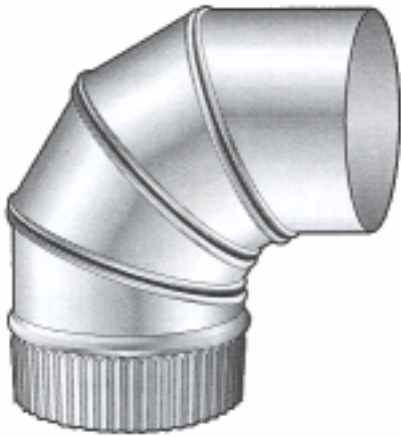
- 4 Assemble the 100mm galvanized flue pipes together using pop rivets or self tapping screws to secure. We recommend all flue joints be sealed. Lower the 100mm galvanized flue length from the roof through the flue outer heat shield and locate onto heater flue stub.
- 5 Fix an appropriate weather shield around the flue outer heat shield and seal to roof or chimney material with appropriate sealer.
- 6 Check 100mm galvanized inner flue length at top of flue outer heat shield at fit gas cowl.
- 7 Start heater and run for at least 15 minutes and check for flue spill where possible

Flue Kit Part Number: 552327

Note: It is the installer's responsibility to ensure that the installation complies with AS5601 2002 and all local body regulations.

Will fit Masport Piccolo, Sofia, Madrid, New Orleans & New York Gas Fires

Extension and Parts List



100mm Bend
Part No: 551496



B Vent Cowl
Part No: 556681



**Chimney Flashing Plate
and Cowl Kit**
Part No: 556682



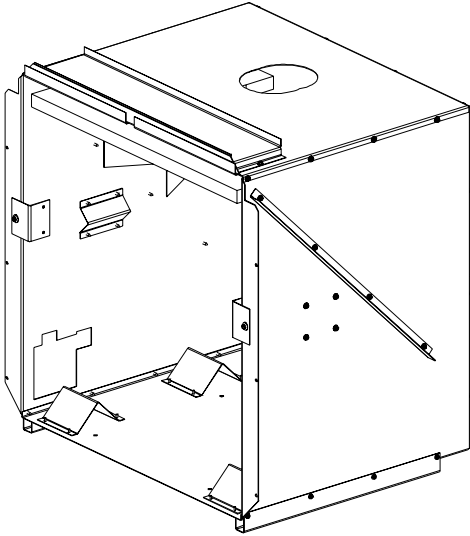
100mm Galvanized Flue
Length - 900mm
Part No: 586097



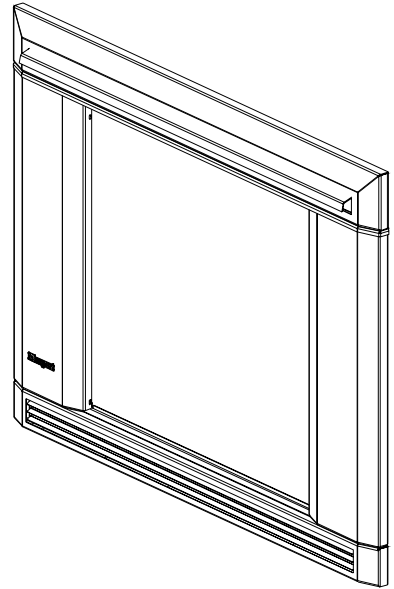
**Expandable to
2 metres**

**Masonry Chimney
Extension Kit**
Part No: 946-514

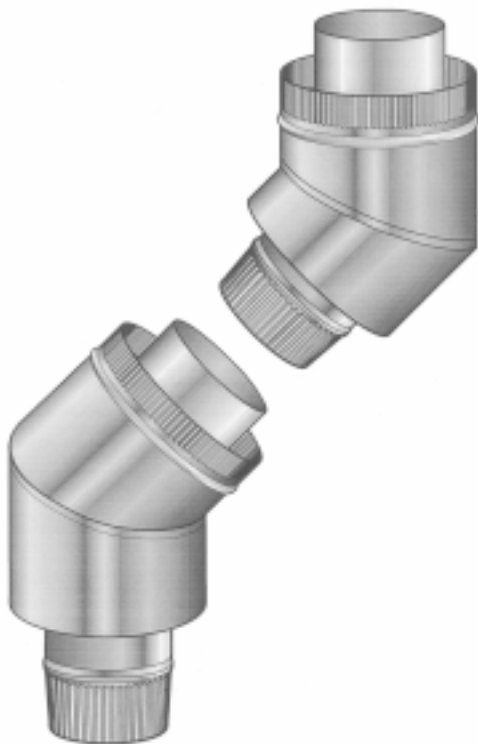
Inbuilt Zero Clearance Kit and Accessories



**Zero Clearance Box
for Piccolo, Sofia & Madrid**
Part No: 990940



Zero Clearance Fascia
Piccolo Part No: 990941
Sofia Part No: 990939
Madrid Part No: 990943



Offset Kit
Part No: 552333



Extension Kit - 900mm
Part No: 552331

Will fit Masport Piccolo, Sofia & Madrid Gas Fires